

SFL Eight, Electrical socket Schuko (2x), Kabel 1 m, Mattschwarz



Parameter

Farbe	Schwarz
Marke	SFL
Sockettyp	Französisch Type E
230 V Ausgänge	2
Katalog Seite	13.65
Hersteller Produktbezeichnung	BP8-2B
Menge im Karton	10

Produktbeschreibung

Elektrische Steckdose. Netzkabel 2 m mit Stecker

Weitere Bilder



Ähnliche Artikel

Bachmann Twist Einbausteckdose Schuko (2x), Kabel 2 m, Mattschwarz
F004921



Anleitung

IROSAN



Points de collecte sur www.quefairedesdechets.fr
Privilégiez la réparation ou le don de votre appareil !

Installation instructions - Please keep safe

Conserver les instructions de montage s'il vous plait

Montageanleitung - Bitte aufbewahren

Si prega di conservare le istruzioni di montaggio

Por favor conserve las instrucciones para el montaje



BP8 IROSAN_manual_220120

To safely make an electrical connection (article 2 D.B.T.) : **Be sure to turn off the power of the housing.**

Pour effectuer un raccordement électrique en toute sécurité : **Veillez à couper l'alimentation générale de l'habitation.**

Alle Montagearbeiten im spannungslosen Zustand durchführen **Es sind die jeweiligen gültigen VDE Richtlinien zu beachten.**

Per affettuare la connessione elettrica dell'apparecchio in modo sicuro, **assicurarsi di spegnere l'alimentazione principale.**

Para hacer una conexión eléctrica segura, **asegurese de apagar la alimentación principal.**



3680 W MAX
16 A - 230 V, 2 P+T

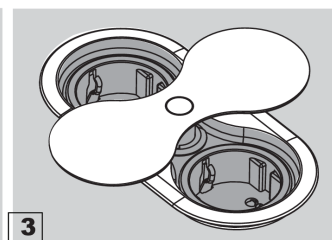
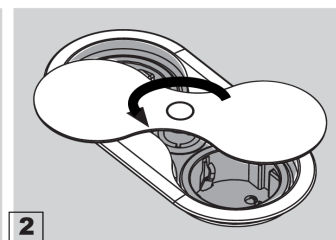
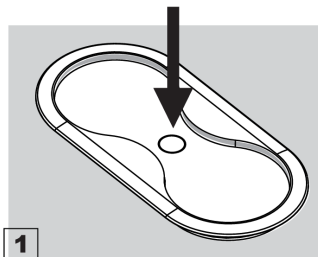
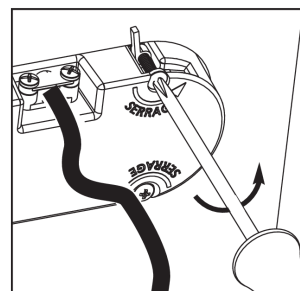
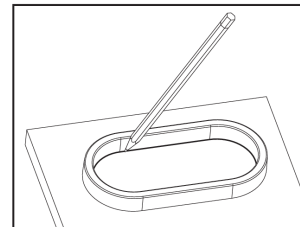
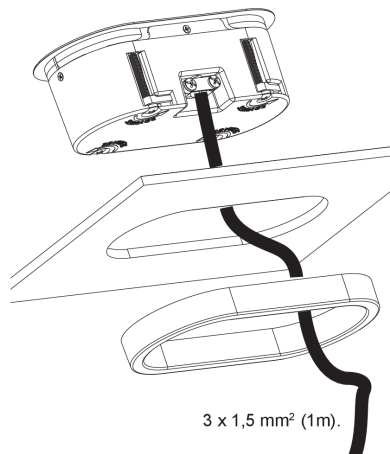
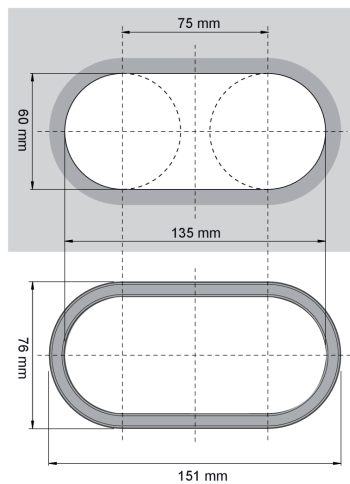
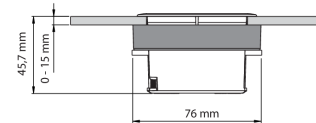
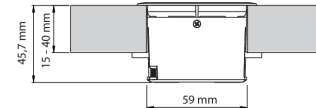
BP8-1 **BP8U-1**
+ USB (5V - 1000mA)

BP8-2 **BP8U-2**
+ USB (5V - 1000mA)

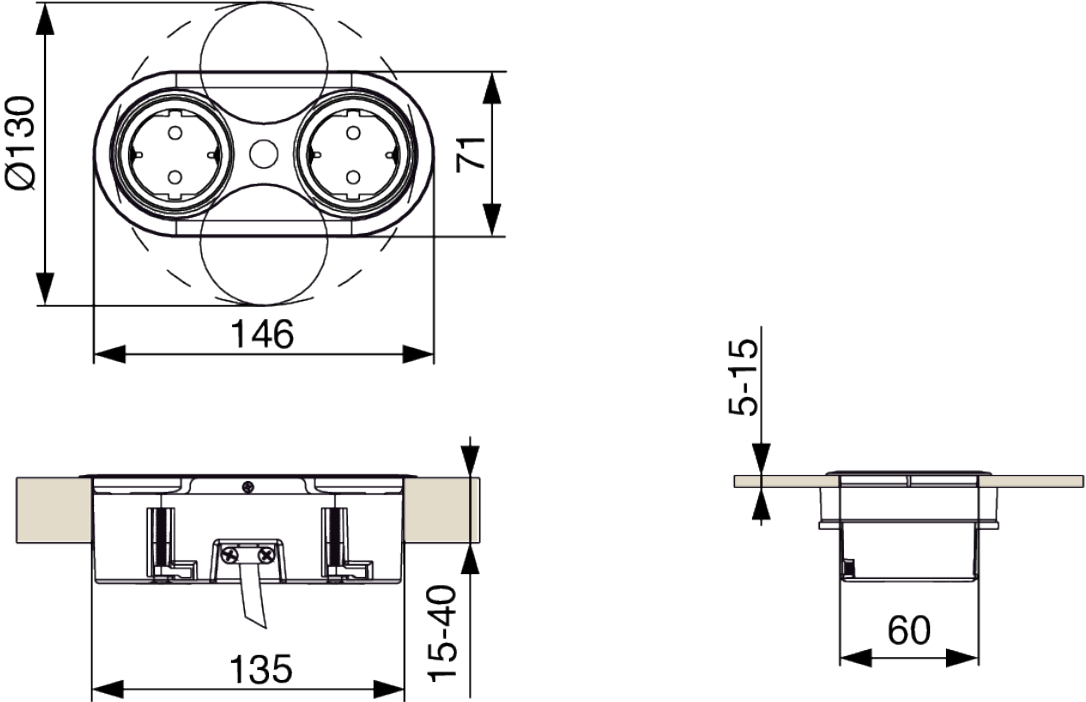
2300 W MAX
10 A - 230 V, 2 P+T

BP8-3 **BP8U-3**
+ USB (5V - 1000mA)

Nouvelle réglementation DEEE (déchets des équipements électriques et électroniques)
Un produit marqué du logo poubelle barrée doit être déposé dans un point de collecte.
Il ne doit pas être jeté avec les ordures ménagères.
Vous contribuez ainsi à préserver les ressources naturelles et à protéger la santé humaine.



2D-Zeichnung



Konformitätserklärung

UE DECLARATION OF CONFORMITY



SFL (Société de Fabrication de Luminaires)
Technoparc EPSILON
65 rue Isaac Newton
83700 Saint Raphaël

declare that **BP8-2B** (Ref : BP8-2) built-in 2 x sockets class I IP20 230V 50Hz 16A, 3600W

comply with the provisions of the European Communities Council Directives including the latest amendments and last harmonized standards:

- 1) **Electrical safety :**
Directive 2014/35/UE of February 26th 2014
IEC 60884-1 : 2002 + A1 : 2006 + A2 : 2013
DIN VDE 0620-1 : 2016
- 2) **RoHS :**
Directive 2017/2102/UE of november 21th 2017
EN 62321 : 2009
EN 50581 : 2013
- 3) **Electrical and Electronic Equipement wastes :**
Directive 2012/19/UE of July 4th 2012
- 4) **Eco conception :**
Directive 2009/125/UE of october 21th 2009
- 5) **Affichage environnemental :**
Regulation 1369/2017/UE of July 4th 2017
Regulation 2019/2015/UE if March 11th 2019

Made at Saint Raphaël on: 2023.04.19

Stéphane VERON
CEO

P.O.

DE031 - 13/12/2012 - R : 3

WEEE Policy Document



WEEE Registration

Hranipex Ltd complies with WEEE (Waste electricals and electronic equipment) regulations 2006.

We are registered directly under this scheme (Registration number: WEE/AX4945YF).

All Items subject to these regulations are appropriately marked.

We are constantly reviewing our WEEE obligations to ensure we comply with regulations.

Hranipex Ltd
Unit 2, Radial Park
Solihull Parkway
Birmingham Business Park
Birmingham, B37 7YN
United Kingdom

T +44 121 767 91 80
E uk-hranipex@hranipex.com
W www.hranipex.co.uk
CN: 07754143, VAT: 120037966
EORI: GB120037966000/

Citi Bank, Sort code: 18-50-08
Swift/BIC: CITIGB2L
GBP Acc. no.: 17882769
IBAN: GB58CIT118500817882769

Citi Bank, Bank code: 2600
Swift/BIC: CITICZPX
EUR Acc. no.: 2530440301
IBAN: CZ562600000002530440301