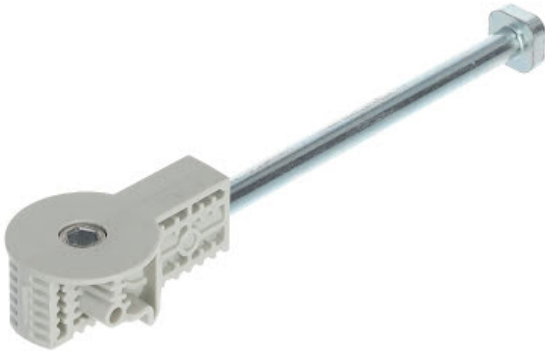


Italiana Ferramenta Quick Tech Arbeitsplattenverbinder Ø35mm M8x150

Parameter

Katalog Seite

14.22



Produktbeschreibung

Italiana Ferramenta Quick Worktop Connector Quick Tech Ø35 has been conceived to join two worktops or panels together. The installation is fast and simple as the two parts don't fall when placed in position. The fastening becomes easier by using an S6 mm allen wrench, or even better, a cordless driver. It is suitable for worktops and panels minimum 25 mm thick. Key Features: Very fast connection and tightening of the panels together Easy installation into Ø35 mm hole It consists of two parts: Main body with tightening dowel M8x64, M8x100 or M8x150 Round cap to suit the dowel head.

Weitere Bilder



Ähnliche Artikel

Riex JC31 Arbeitsplattenverbinder, L65
F001822



Riex JC31 Arbeitsplattenverbinder, L120
F001823



Riex JC31 Arbeitsplattenverbinder, L150

F001824



Italiana Ferramenta Quick Tech Arbeitsplattenverbinder ø35mm M8x64

F010484



Italiana Ferramenta Quick Tech Arbeitsplattenverbinder ø35mm M8x100

F010485



Komponenten

Italiana Ferramenta Quick Runde Kappe D35

F002701



2D-Zeichnung

