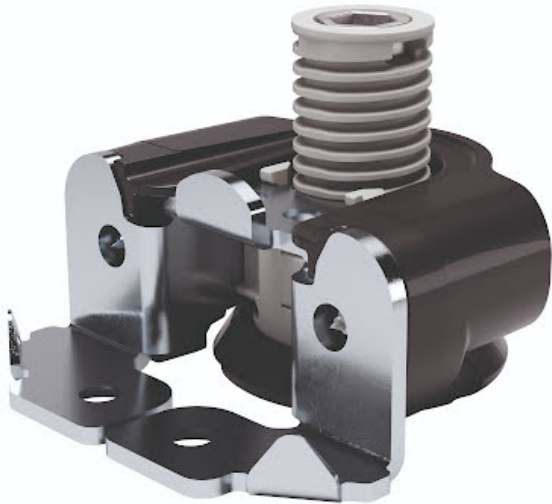


## Italiana Ferramenta Integrato Tech G Leveller mit 2 Stiften, verstellbar H20, mit Schrauben



### Parameter

Marke	Italiana Ferramenta
Höhe	35 mm
Katalog Seite	5.13
Tragfähigkeit	175 kg

### Produktbeschreibung

Italiana Ferramenta Integrato G Tech Hidden Leveller with 2 Spikes and Screws Integrato G hidden leveller suitable to align heavy duty wardrobes, bookcases and modular furniture. The adjustment of the leveller can be carried out from above through a Ø6 mm hole or a Ø8 mm hole on the bottom panel, by using an S4 or an S6 allen wrench. The leveller is provided with an independend engineering plastic glide in order to make the adjustment easier and to prevent the scratching of the floor. Key Features: Levellers are available with different heights, with main body in steel and engineering plastic. Integrato G Tech is equipped with pre-mounted screws. It is an important feature (patent pending) which facilitate and accelerate the alignment and assembling of the levellers on the side panels. In any case, all versions of Integrato Tech are capable of supporting a 175 kg load each.



2D-Zeichnung

